

SAWYER PLAN

Master Suite on
Upper Floor

3 Bedrooms

Optional 4th
Bedroom or Study
(see Options sheet)

2-1/2 Baths

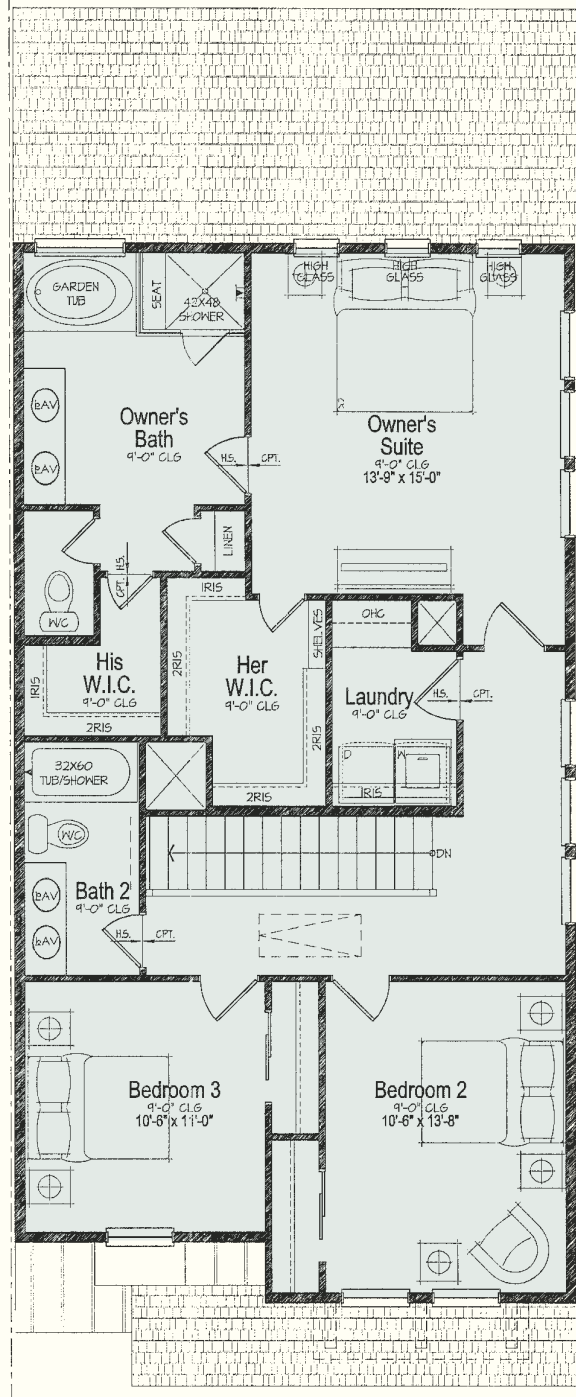
2 Car Garage

Patio

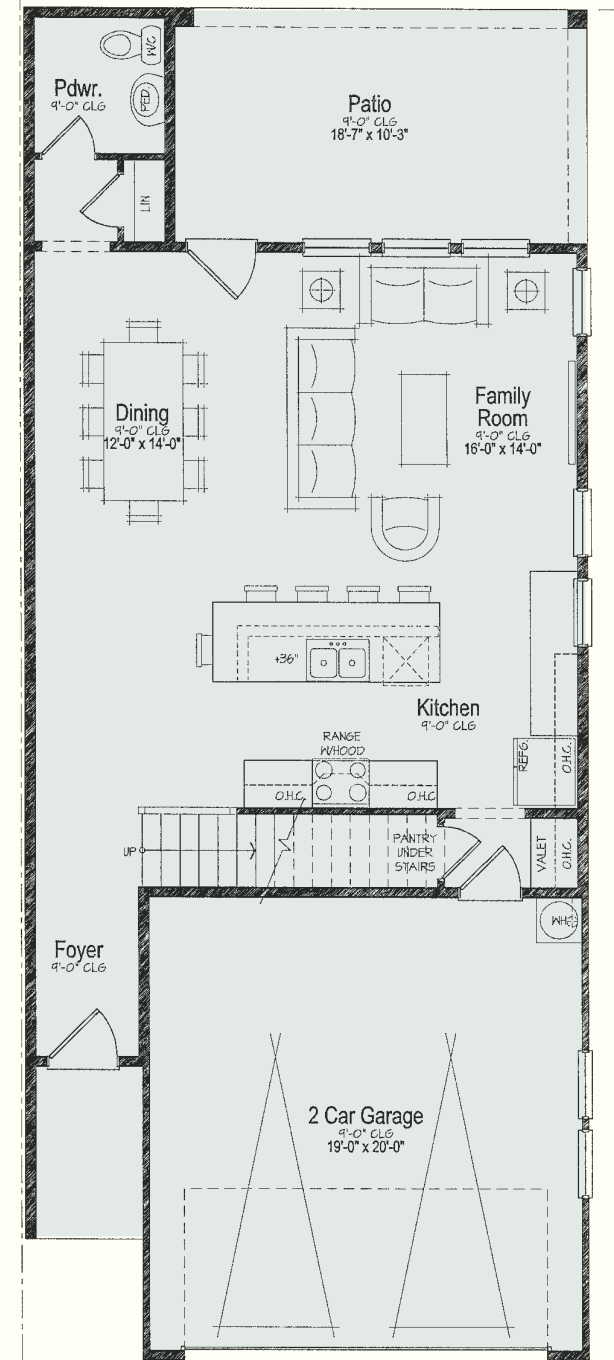
Main Floor: 835 sq. ft.

Upper Floor: 1,096 sq. ft.

Total: 1,931 sq. ft.



UPPER FLOOR

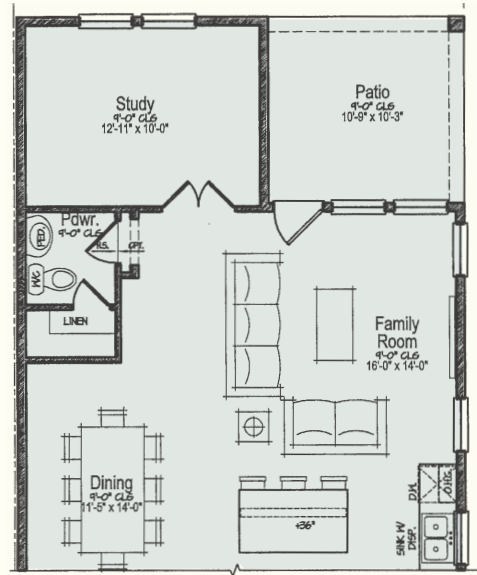


MAIN FLOOR

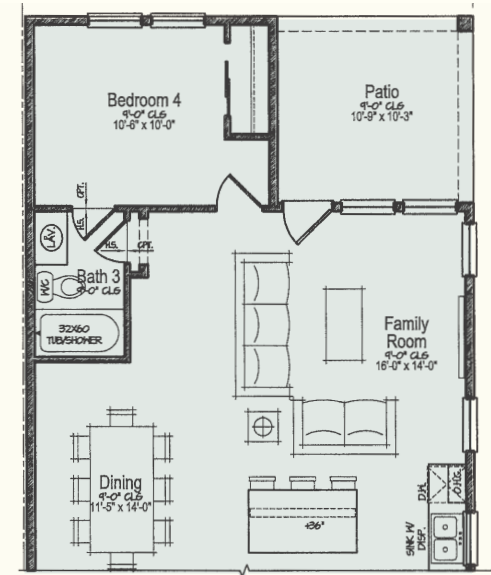
SAWYER PLAN OPTIONS

Optional Study
on Main Floor

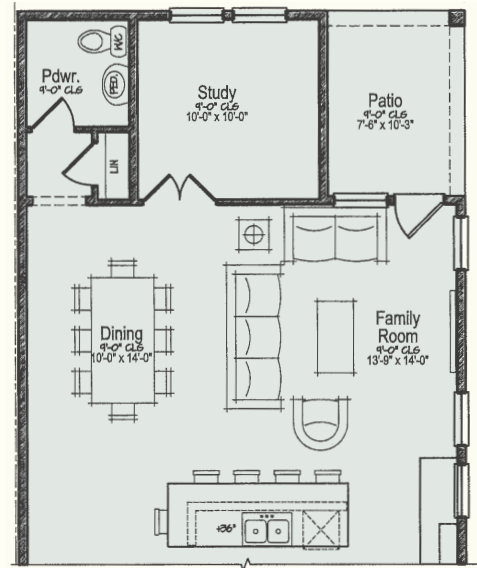
Optional 4th
Bedroom on
Main Floor



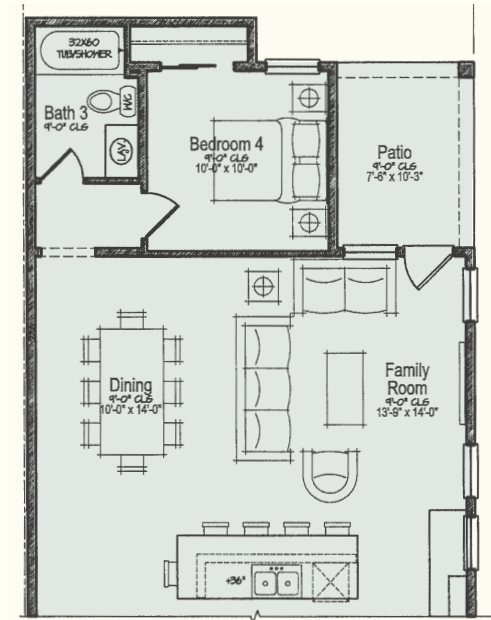
SAWYER OPTIONAL STUDY ON MAIN FLOOR
147 SQ. FT.



SAWYER OPTIONAL 4TH BEDROOM ON MAIN FLOOR
147 SQ. FT.



SAWYER OPTIONAL STUDY ON MAIN FLOOR
109 SQ. FT.



SAWYER OPTIONAL 4TH BEDROOM ON MAIN FLOOR
141 SQ. FT.